

Carolans Concerto

Allegro

Musical score for Carolans Concerto, featuring eight staves of music. The score includes various guitar chords and triplets. The chords are: D, A, D, A, D, G, A, D, A7, D, G, D, G, A, G, D, EM, A, D, A7, D, G, D, A, D, A, G, A, D, A, G, D, A, G, D, A, D, Em, D, G, A, D, A, D.

(" STANDARDS ")

\*182. Blind Mary

Andante

Musical score for Blind Mary, featuring three staves of music. The score includes various guitar chords. The chords are: D, G, D, A, D, G, D, BM, A, D, A, D, A, D, BM, G, A, D.

COL. JOHN<sup>ll</sup> Planxty<sup>ll</sup> Irwin

("STANDARDS")

Moderato

D G D Bm G D A

5 D G D Bm G D A D

D A Bm E A

13 D G D Bm G D A D

Detailed description: This block contains the first four staves of music for the piece 'Standards'. The music is written in treble clef with a key signature of two sharps (D major) and a time signature of 6/8. The tempo is marked 'Moderato'. The first staff starts with a treble clef, a key signature of two sharps, and a 6/8 time signature. The notes are: D4, E4, F#4, G4, A4, B4, A4, G4, F#4, E4, D4. Above the staff are the chords: D, G, D, Bm, G, D, A. The second staff starts with a measure rest for 5 measures, then continues with the same melody. Above the staff are the chords: D, G, D, Bm, G, D, A, D. The third staff starts with a repeat sign, then continues with the melody. Above the staff are the chords: D, A, Bm, E, A. The fourth staff starts with a measure rest for 13 measures, then continues with the melody. Above the staff are the chords: D, G, D, Bm, G, D, A, D.

Separation of Soul and Body

Larghetto

Gm Dm

5 Gm Dm Gm

9 Gm

13 Cm / Gm Dm Gm

Detailed description: This block contains the first four staves of music for the piece 'Separation of Soul and Body'. The music is written in treble clef with a key signature of two flats (B minor) and a time signature of common time (C). The tempo is marked 'Larghetto'. The first staff starts with a treble clef, a key signature of two flats, and a common time signature. The notes are: B3, C4, D4, E4, F4, G4, F4, E4, D4, C4, B3. Above the staff are the chords: Gm, Dm. The second staff starts with a measure rest for 5 measures, then continues with the melody. Above the staff are the chords: Gm, Dm, Gm. The third staff starts with a measure rest for 9 measures, then continues with the melody. Above the staff is the chord: Gm. The fourth staff starts with a measure rest for 13 measures, then continues with the melody. Above the staff are the chords: Cm /, Gm, Dm, Gm.

CAPTAIN HENRY O'KAIN

("STANDARDS")

Em D Bm

Em Bm Em

Em D Bm

Em Bm Em

G D Bm

Em C Bm Em

C G Bm D D

Em Bm Em

192. Cremonea

Andante AM DM AM

DM AM G AM AM G

AM DM AM E AM

\*29. Bridget Cruise. *Fourth Air*

*Andante*

Handwritten musical score for 'Bridget Cruise. Fourth Air' in G major, 3/4 time. The score consists of six staves of music. The tempo is marked 'Andante'. The key signature has one sharp (F#). The score includes various chords and triplets. The chords are: G, Em, C, Am, C, D7, G, G, Em, C, Am, C, D7, G, D, C, Am, G, Em, D7, G, Am, C, Am, C, D7, G.

150. Eleanor Plunkett

("STANDARDS")

*Andantino*

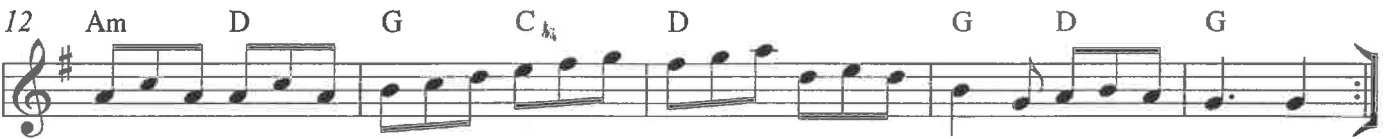
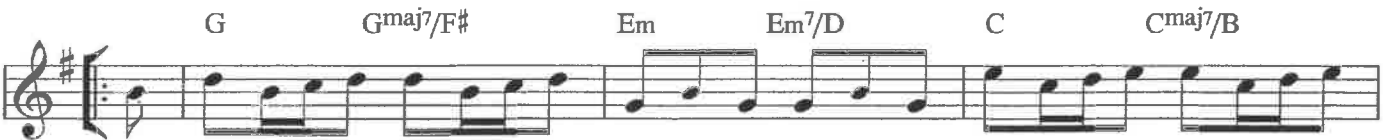
Handwritten musical score for 'Eleanor Plunkett' in G major, 3/4 time. The score consists of three staves of music. The tempo is marked 'Andantino'. The key signature has one sharp (F#). The score includes various chords. The chords are: G, Em, C, Bm, C, D, G, Em, C, D, C, Bm, Em, G, C, D.



(11 STANDARDS)

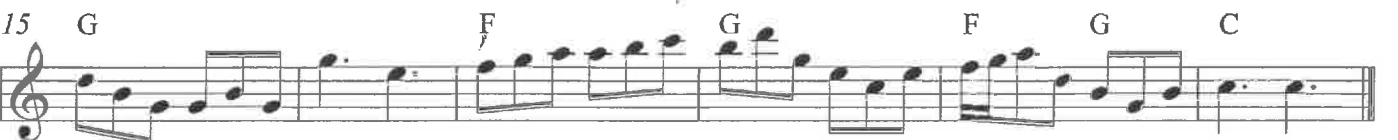
# Fanny Power

Grazioso  
G



# Frank Palmer

Allegretto



# Sheebeg and Sheemore ("STANDARDS")

Andante

D G D G

6 A D Bm G D A

12 Bm G A G A D

17 D G D A Bm

23 G D A Bm G D

29 G A G A 1. D 2. D